



TRANSLATION SERVICES AVAILABLE AT (206) 684-3000

- Información en español • Impormasyon sa Tagalog • 中文資訊 • Thông tin bằng tiếng Việt • 한국어 정보 • Macluumaad Af-Soomaali ah

PROJECT OVERVIEW:

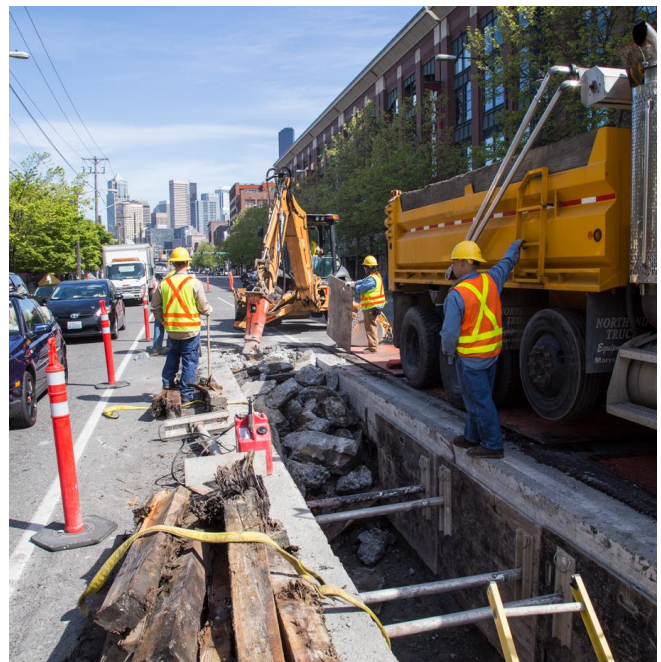
Seattle City Light crews will be working along 1st Avenue South, between South Royal Brougham Way and Railroad Way South to install a new electrical duct bank. This work is needed to upgrade aging electrical infrastructure in the SODO neighborhood. **Please see the map on the back for more information.**

PROJECT BENEFITS

- This project will replace aging electrical infrastructure and increase electrical reliability for the SODO and Pioneer Square areas.

PROJECT IMPACTS

- **Stage 1:** Crews will be working in the center two lanes on 1st Avenue South. Traffic will be detoured to the outside lanes going north and south.
- **Stage 2:** Crews will transition to the west side of 1st Avenue South, occupying both southbound lanes for duct bank excavation. Southbound traffic will merge with the northbound lanes on 1st Avenue South.
- Work will not occur two hours before and after major Pioneer Square/South of Downtown (SODO) events.
- Noise is expected during construction from jackhammering and heavy equipment.
- Parking will be restricted on both sides of 1st Avenue South for truck staging and equipment storage.
- Crews will maintain access to driveways for businesses.
- Maintenance power outages are not anticipated for this work.



Construction on 1st Avenue South will begin in early February 2018.

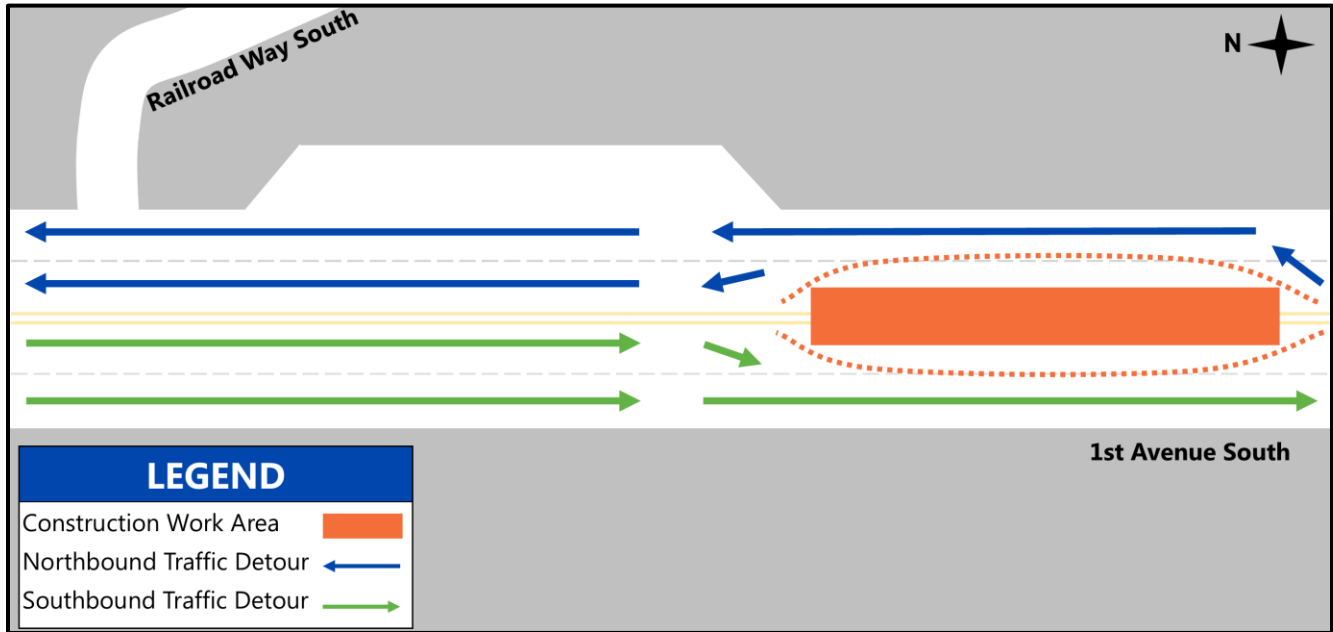
MORE INFORMATION

Bill Danbom

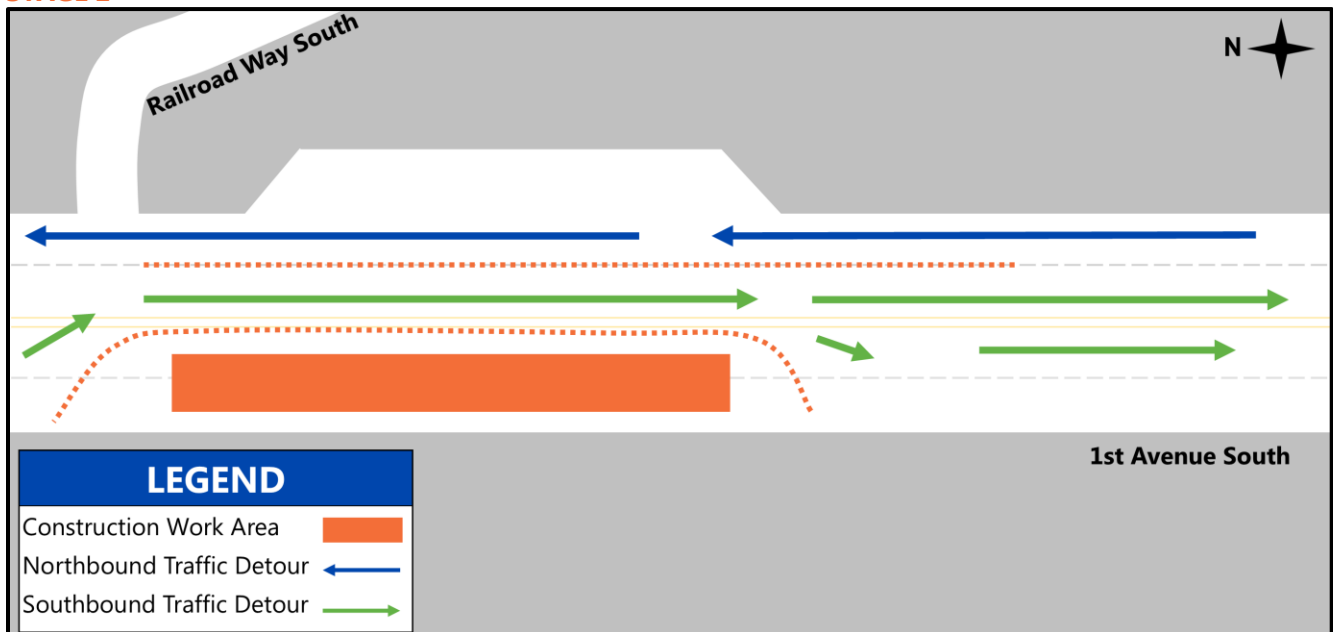
Senior Electrical Service Representative
(206) 386-1797

Bill.Danbom@seattle.gov
seattle.gov/light/atwork

CONSTRUCTION WORK AREAS - STAGE 1



STAGE 2



TIMING AND COORDINATION

Construction Start: Construction is tentative to start in early February 2018.

Duration: Approximately three months

Schedule: Monday – Friday, 9 a.m. to 3 p.m. and weekends from 9 a.m. to 6 p.m.



OUR MISSION

Seattle City Light is dedicated to delivering customers affordable, reliable and environmentally responsible electricity services.